

MAGNIFIQUE MEETINGS



SOFITEL
BRISBANE CENTRAL



CONTENTS

THE HOTEL

CONFERENCE PACKAGES

BREAKFAST AND REFRESHMENT BREAKS

LUNCH AND DINNER

COCKTAIL

BEVERAGE

CAPACITY

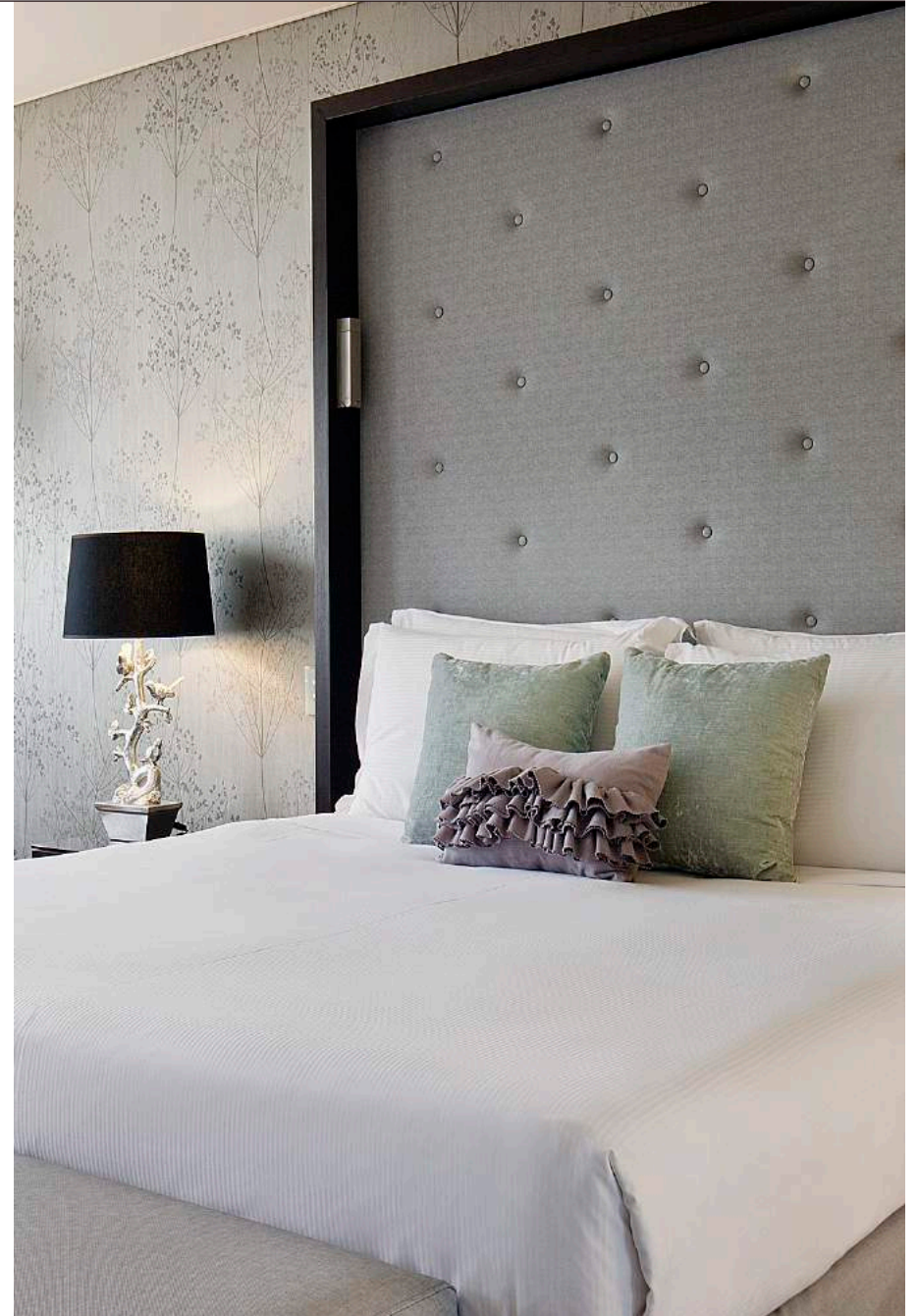
AUDIO VISUAL



ACCOMMODATION

379 LUXURIOUS ROOMS & 37 SUITES

Luxurious interior spaces that offer relaxation in the heart of Brisbane City. Savour exceptional views from the iconic ANZAC square, to our exquisite city skyline and the famed Sunshine Coast hinterland.



RESTAURANTS & BARS

SUZETTE

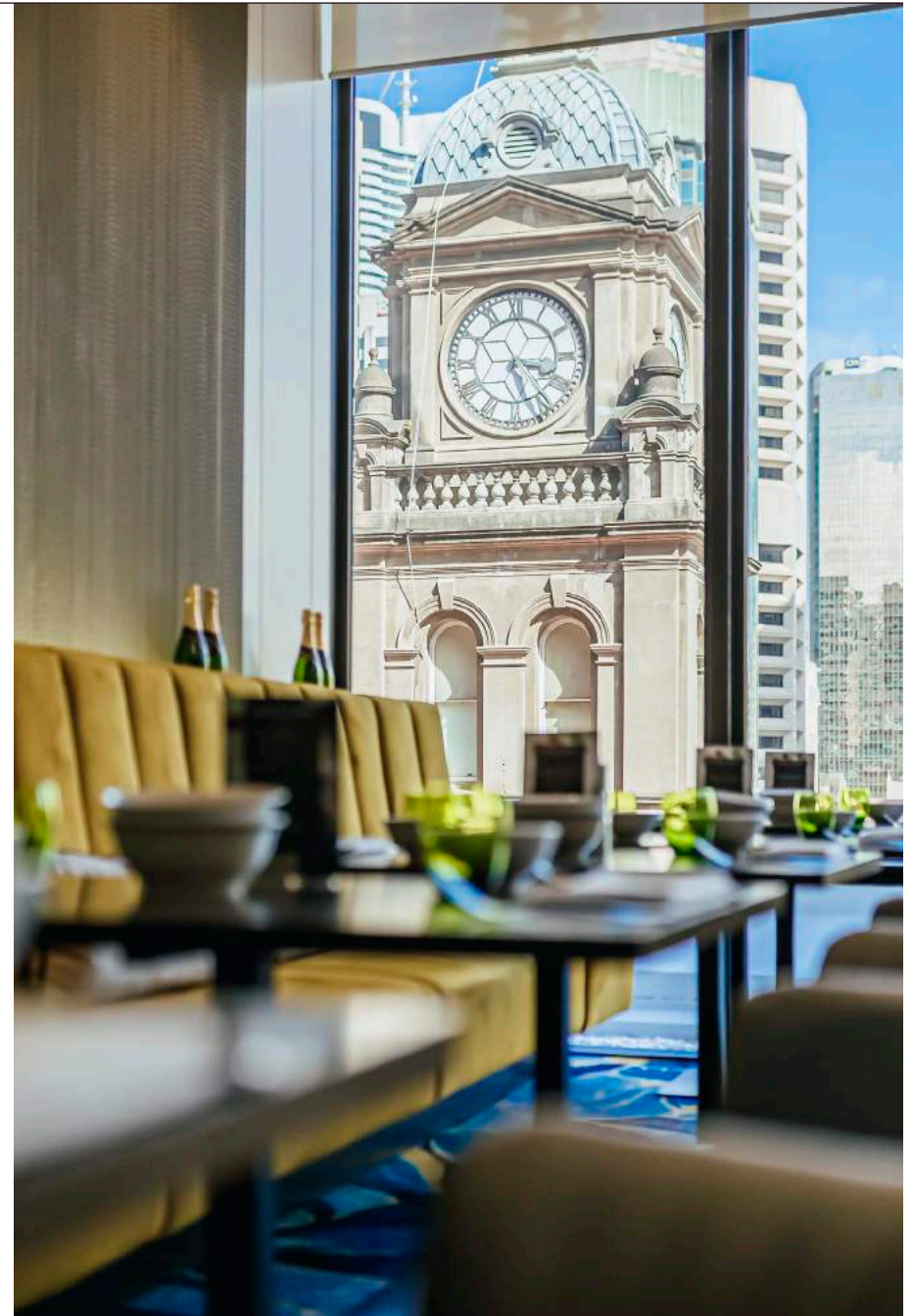
Suzette delivers a unique all-day a la carte dining experience, infusing worldwide culinary trends with the sophistication of Brisbane and its cuisine.

We hope to deliver an indulgent dining experience through our passion for service and providing unforgettable moments for our guests, Suzette offers diners the perfect place to relax, indulge, and celebrate.

CUVÉE

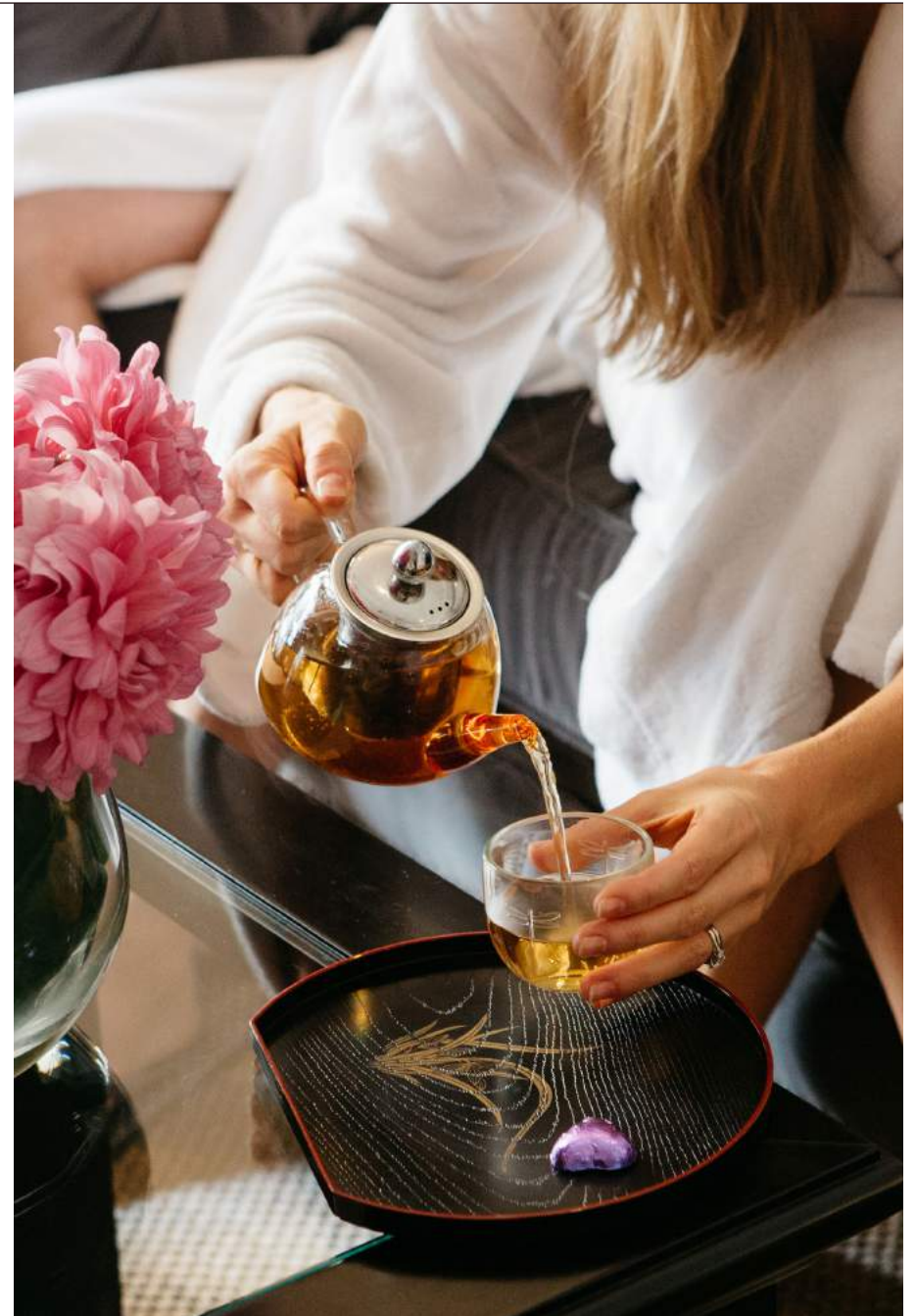
At Cuvée discerning tastes are indulged with vintage and non-vintage labels from the world's great Champagne houses, complemented by a connoisseur's selection of Australian, European and New World wines and bespoke cocktails.

By day, the lounge is a popular meeting place to enjoy coffee and a European inspired all-day menu.



SERVICES

- Brisbane's largest hotel meeting and event venue
- Meeting rooms accommodating events of up to 1,100 delegates
- State-of-the-art Audio Visual Partner (AV Partners)
- Elite High Performance Gymnasium
- Stephanies Spa Retreat
- Swimming Pool and Spa
- SoFit Gymnasium
- 24-Hour Reception
- 24-Hour In-Room Dining
- Guest Laundry



CONFERENCE PACKAGES

LUXURY MEETING PACKAGE \$100 PER PERSON

Arrival tea and espresso/pod machine coffee

Morning tea including espresso/pod machine coffee and tea with two break food items

Working lunch served with espresso/pod machine coffee, tea soft drinks and juice with your choice of a served buffet or boxed lunch

Afternoon tea including espresso/pod machine coffee and tea with two break food items

Whiteboard or flipchart

Sofitel notepads and pens

Chilled water and individually-wrapped mints

MAGNIFIQUE PACKAGE \$110 PER PERSON

Arrival tea and espresso/pod machine coffee with one break food item

Morning tea including espresso/pod machine coffee and tea with two break food items

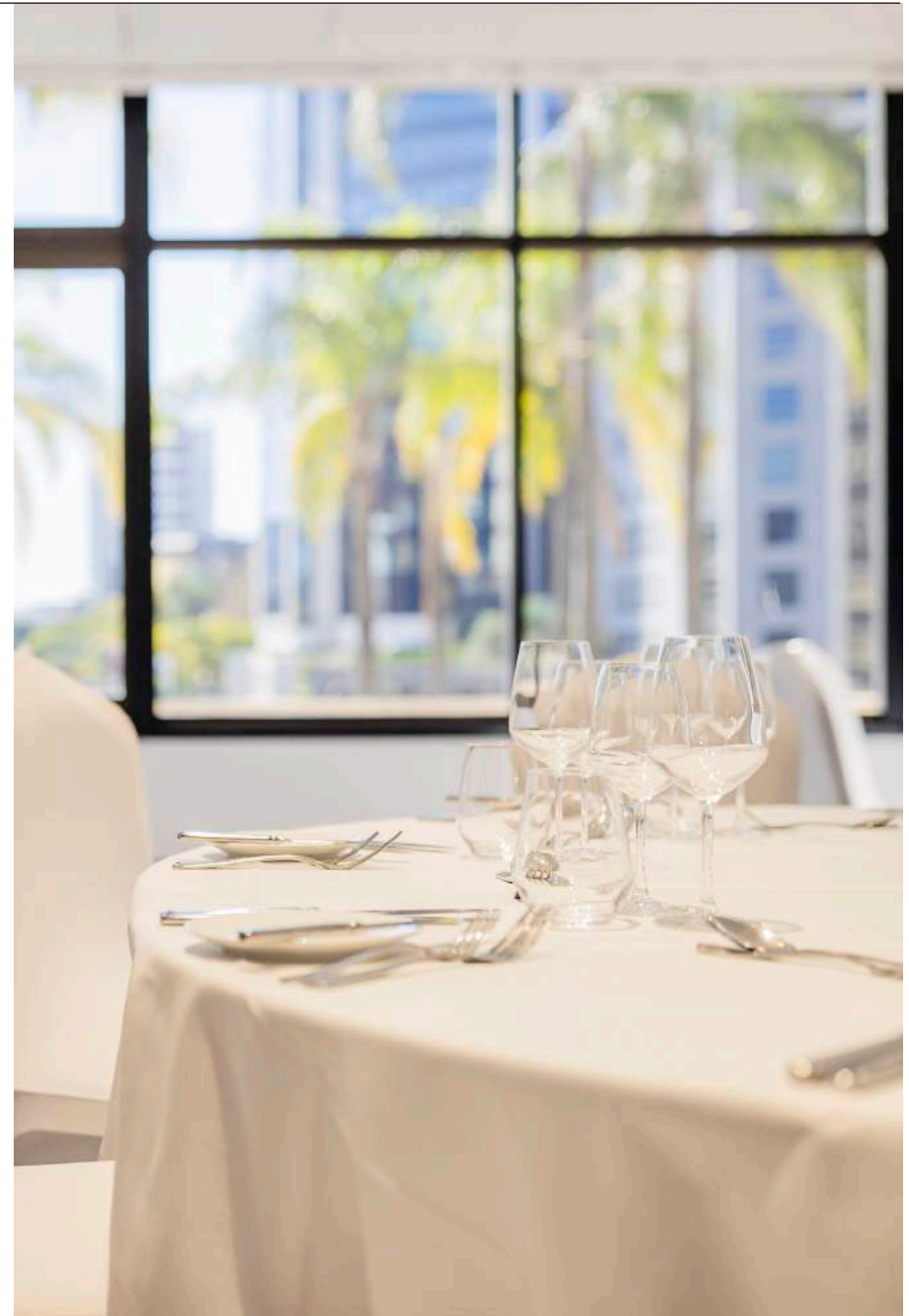
Working lunch served with espresso/pod machine coffee, tea, soft drinks and juice with your choice of a served buffet or boxed lunch

Afternoon tea including espresso/pod machine coffee and tea with two break items

Whiteboard or flipchart

Sofitel notepads and pens

Chilled bottled still and sparkling water with individually-wrapped mints and sweets



BREAKFAST AND BREAKS

CHEF'S BREAKFAST **\$50 PER PERSON**
MINIMUM OF 30 GUESTS

BREAKS **\$15 PER PERSON**
MORNING AND AFTERNOON TEA

Chef's selection of 1 savoury and 1 sweet item, tailored to all dietaries, served with freshly brewed coffee and a selection of traditional, infused and herbal tea.

COFFEE AND TEA
Freshly brewed coffee and a selection of traditional, infused and herbal teas
½ Hour \$10 per person
4 Hours \$15 per person
8 Hours \$20 per person

BARISTA CART
A barista cart is available to add to any conference or event.
Half-Day Barista Service \$900
Full-Day Barista Service \$1,500

UPGRADE OPTIONS
Additional Break Item \$6 per person, per item
Soft Drinks & Fruit Juices \$8 per person
Sofitel Smoothie of the Day \$8 per person
Whole Seasonal Fruit \$2.5 per piece

MAGNIFIQUE BREAKS **\$39 PER PERSON**
MINIMUM OF 30 GUESTS



LUNCH AND DINNER MINIMUM OF 30 GUESTS

PLATED LUNCH OR DINNER

2 Courses \$75 per person

3 Courses \$89 per person

Alternate Drop \$6 per person, per course

All plated lunches and dinners include freshly baked bread rolls, tea and coffee.

BUFFET LUNCH AND DINNER **\$95 PER PERSON**

Freshly baked bread rolls, salads, hot dishes, seasonal fruit and desserts

Served with tea and coffee.

BARBEQUE BUFFET **\$95 PER PERSON**

Chefs selection of freshly baked bread rolls, antipasto, salads, barbeque selection and desserts. Served with tea and coffee.



COCKTAIL RECEPTIONS

MINIMUM OF 30 GUESTS

CANAPÉS

CLASSIC SELECTION \$20 PER PERSON

Choice of 2 hot and 2 cold canapés served over half an hour.

EXECUTIVE SELECTION \$30 PER PERSON

Choice of 3 hot and 3 cold canapés served over one hour.

PREMIER SELECTION \$40 PER PERSON

Choice of 3 hot and 3 cold canapés served over one and half hours.

LUXURY SELECTION \$45 PER PERSON

Choice of 3 hot and 3 cold canapés served over two hours.

Additional Options \$5 per item

FORK DISHES

Add any fork dishes to your canapé selection \$11 per item



BEVERAGE PACKAGES

SUPERIOR BEVERAGE PACKAGE

SELECT TWO WINES AND TWO BEERS

Legacy Brut - Legacy Sauvignon Blanc - Legacy Chardonnay - Legacy Pinot Grigio
- Legacy Cabernet Merlot - Legacy Shiraz Cabernet - Legacy Rosé

Byron Bay Lager - Hahn Premium Light - XXXX Gold - Heineken Zero

Soft drinks and juices

- 1 Hour \$29 per person
- 2 Hours \$38 per person
- 3 Hours \$47 per person
- 4 Hours \$52 per person
- 5 Hours \$59 per person

LUXURY BEVERAGE PACKAGE

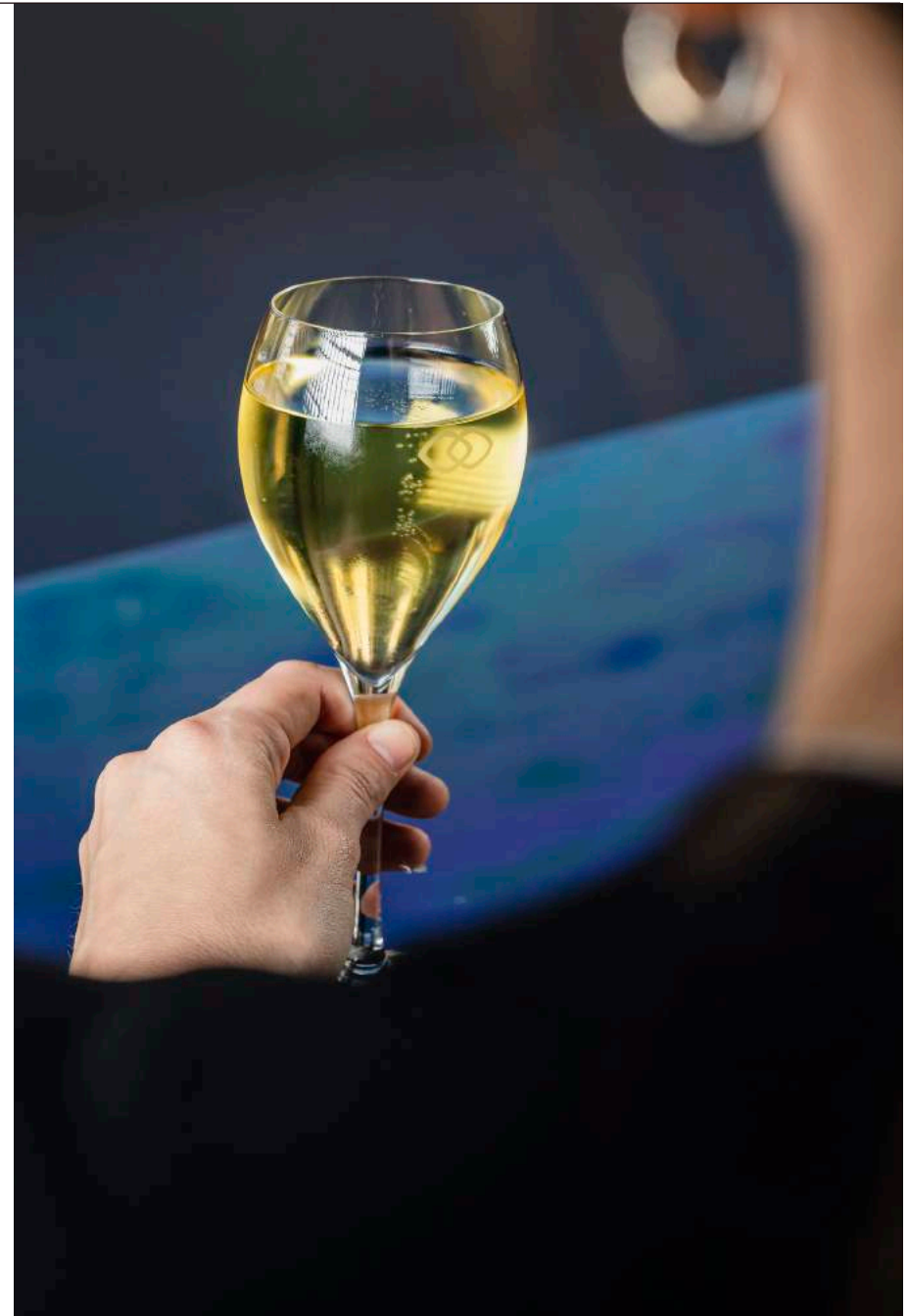
SELECT TWO WINES AND THREE BEERS

Munro Valley Sparkling Brut - Kismut Moscato - The Falls Sauvignon Blanc
- Aquilani Pinot Grigio - Credaro Five Tales Chardonnay - ALTA Pinot Noir -
Bruno Shiraz - Reverie Rosé

Eumundi Lager - Hahn Premium Light - James Squires Swindler - James Squires
Mid Strength - Heineken 3 - Heineken Zero

Soft drinks and juices

- 1 Hour \$36 per person
- 2 Hours \$48 per person
- 3 Hours \$59 per person
- 4 Hours \$68 per person
- 5 Hours \$82 per person



BEVERAGE PACKAGES

DELUXE BEVERAGE PACKAGE

SELECT TWO WINES AND THREE BEERS

Veuve Ambal - Felines Jourdan Picpoul - Fringe Societe Grenache Blanc -
Reverie Chardonnay - Reverie Pinot Noir - Rameau d'Or Petit Amour Rosé
- Alain Jaume Cotes Du Rhone 'Grand Veneur' - Vincent Paris Syrah

Kirin Lager - James Squire 150 Lashes - Hahn Premium Light -
Heineken 3 - Heineken Zero

Soft drinks, juices and sparkling water

- 1 Hour \$52 per person
- 2 Hours \$76 per person
- 3 Hours \$88 per person
- 4 Hours \$99 per person
- 5 Hours \$108 per person

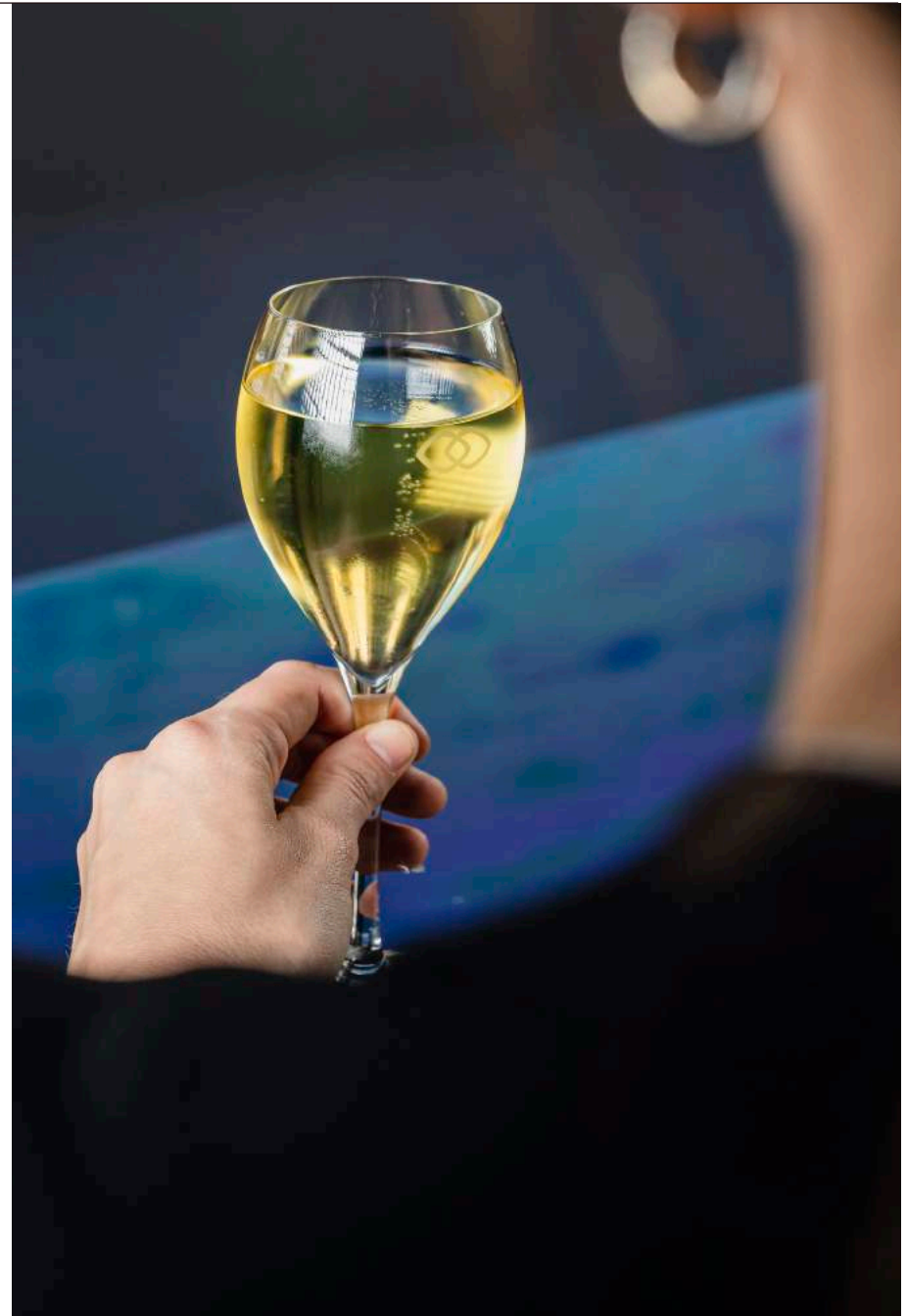
SPIRITS

ADD ON TO ANY BEVERAGE PACKAGE

Absolut Vodka - Malfy Gin - Barcardi Rum - Bundaberg Rum
- Chivas Regal 12 Yr - Wild Turkey Bourbon

- 1 Hour \$15 per person
- 2 Hours \$20 per person
- 3 Hours \$25 per person
- 4 Hours \$30 per person

All served with post-mix mixer.



BEVERAGE PACKAGES

NON-ALCOHOLIC COCKTAILS

ADD ON TO ANY BEVERAGE PACKAGE

Amalfi Spritz - Lyre's Amaretto Sour - Lyre's Americano - Lyre's Rosso & Tonic

1 Hour \$20 per person

2 Hours \$38 per person

3 Hours \$56 per person

4 Hours \$74 per person

SOFT DRINKS

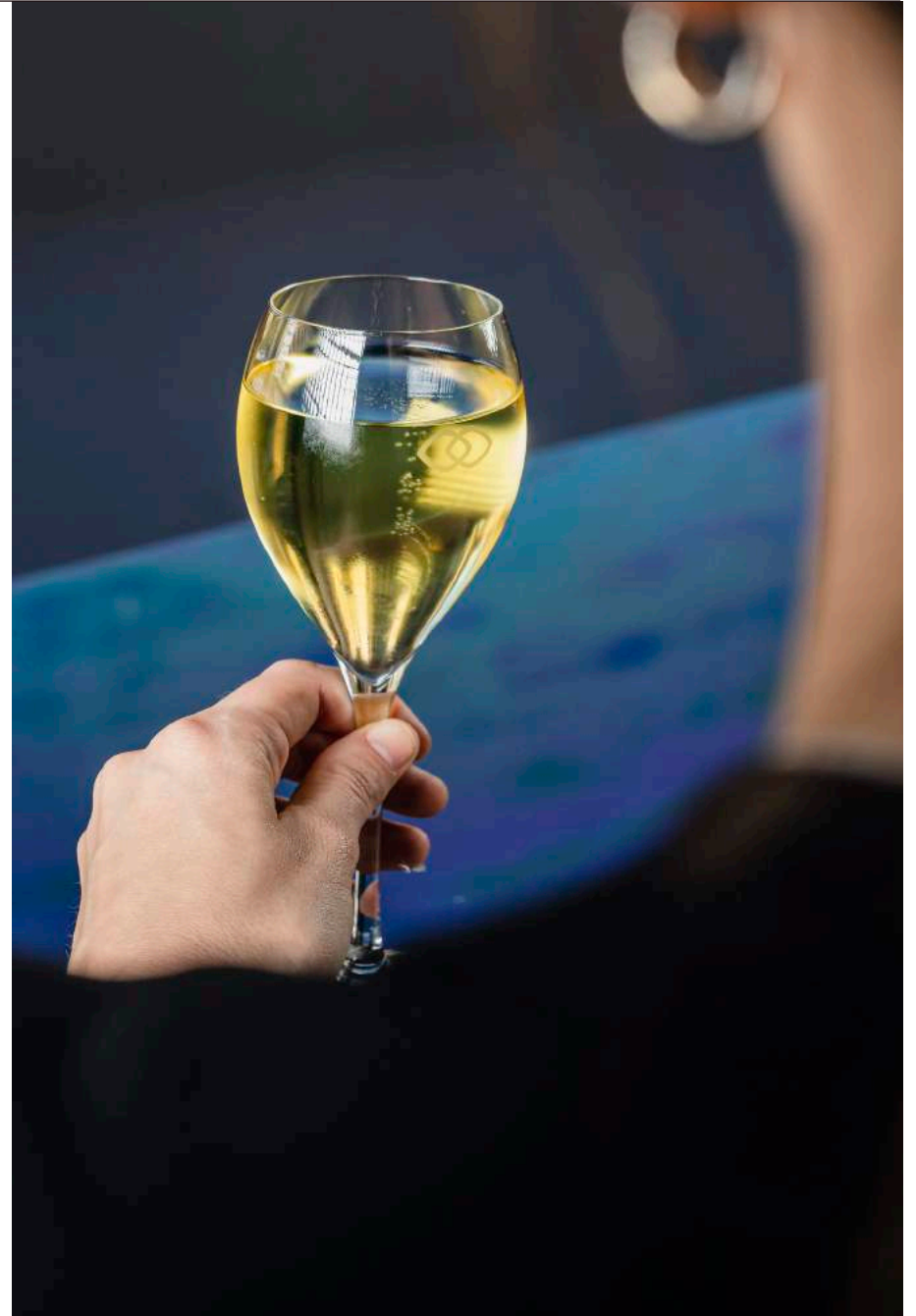
Inclusive of soft drinks and juices.

1 Hour \$14 per person

2 Hours \$18 per person

3 Hours \$22 per person

4 Hours \$26 per person



CAPACITY AND FLOOR PLAN



FUNCTION ROOM	SURFACE M ²	HEIGHT M	CLASSROOM	CABARET	THEATRE	U-SHAPE	BOARDROOM	DINNER
BALLROOM LE GRAND	798	6.5	550	440	1056	-	-	580
BALLROOM THREE	331.8	6.5	252	176	400	-	-	220
BALLROOM TWO	254.1	6.5	216	136	300	-	-	170
BALLROOM ONE	212.1	6.5	120	112	200	-	-	140
ANN STREET LOBBY	450	2.8	-	-	-	-	-	-
REGISTRATION LOBBY	198	6.5	-	-	-	-	-	-
ST GERMAIN	63.51	2.7	30	32	50	18	18	32
BASTILLE	106.24	2.7	72	48	90	39	39	48
BASTILLE ONE	49.92	2.7	24	24	40	15	15	24
BASTILLE TWO	56.32	2.7	24	24	40	15	15	24
CONCORDE	80.5	2.7	45	40	70	24	24	50
ODEON	128	2.4	81	64	100	36	40	80
SOIREE	143	-	-	-	-	-	-	150
LYON	240	3	126	112	230	-	-	140
LYON ONE	112.8	3	54	48	154	30	30	60
LYON TWO	127.2	3	63	64	182	36	36	80
NORMANDY	18.24	2.4	-	-	-	-	8	-
BORDEAUX	12.8	2.4	-	-	-	-	6	-

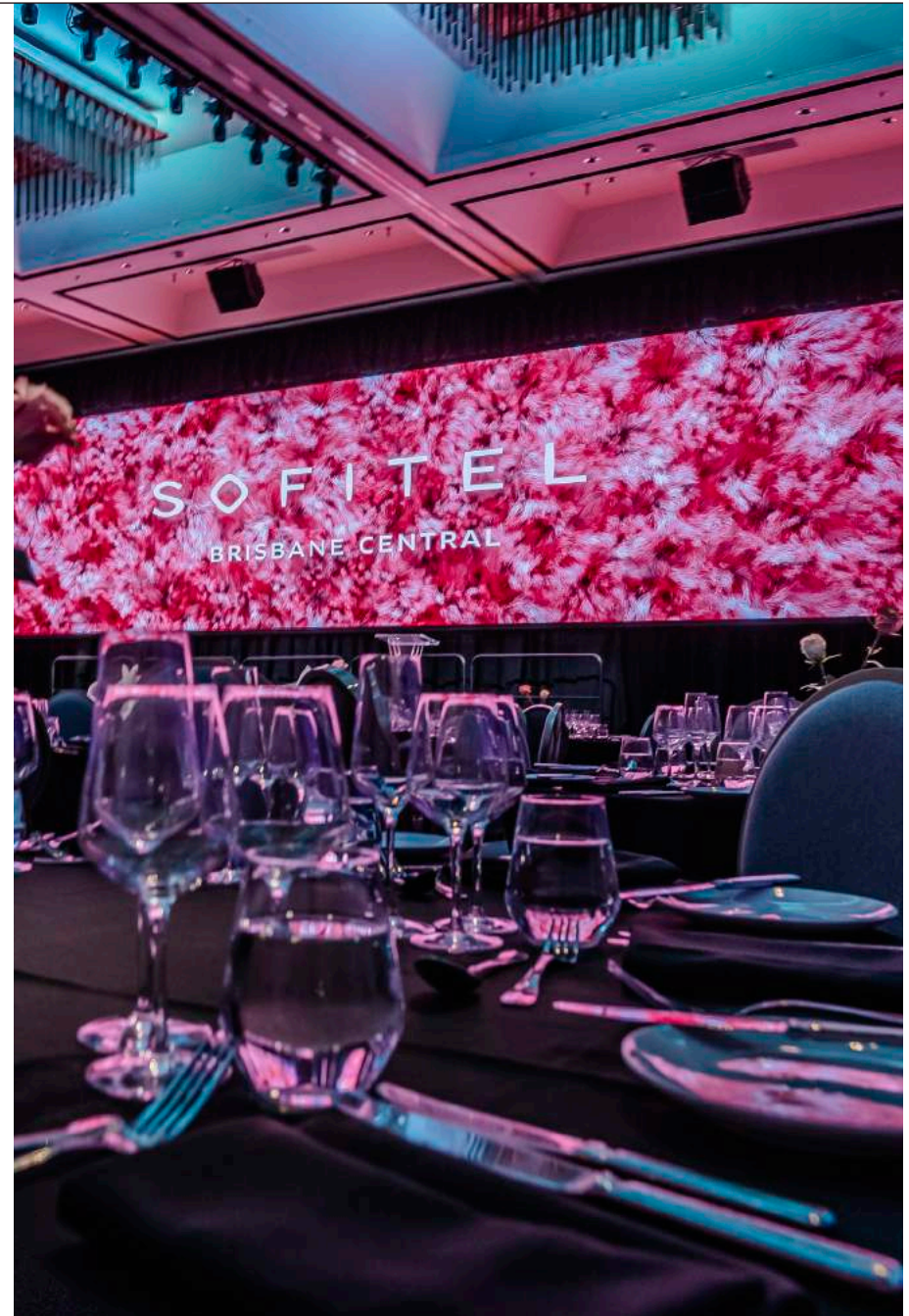
AUDIO VISUAL

Sofitel Brisbane Central's production is managed in-house by AV Partners, Australia's most experienced, innovative and professional audio visual organisation.

The AV Partners team work alongside the Sofitel Brisbane Central Conference and Events department to ensure a flawless five-star event experience for yourself and each of your delegates.

For any enquiries please contact our on-site Audio Visual Manager Brendon Biffin on +61 (07) 3835 4731

AVPartners™



S O F I T E L

BRISBANE CENTRAL

249 TURBOT STREET - BRISBANE CITY - QUEENSLAND 4000

TEL. +61 (7) 3835 3535 - H5992@SOFITEL.COM

WWW.SOFITELBRISBANE.COM.AU

PRICING AND MENUS WITHIN THIS DOCUMENT ARE SUBJECT TO CHANGE